



HEMP CROP PROTECTION



Wildlife pressure on gardens and crops has increased tremendously in the Northeast due to modern urbanization and the rise in deer population. As pressure increases on wildlife to find open spaces for forage, it is critical your crop lands need a strong and sturdy fence system now, more than ever, to deter wildlife from wreaking havoc on your land.



Since our beginning in 1978, Wellscroft has been the Northeast's leading expert in dependable fencing systems for all types of animal inclusion and exclusion. With the recent increased interest in hemp production for CBD oil, farmers have found it necessary to protect their investments with reliable fencing. Deer are the primary offenders causing damage by walking through fields wrecking irrigation lines and poking holes in plastic row cover.

Wellscroft has several options for deer exclusion depending on the grower's long term plan. For a quick, seasonal solution, many are turning to highly visible electrified tape which is installed in either a single plane or as a 3D fence solution. This same fence has been tried and

proven for decades by commercial vegetable growers, ornamental and Christmas tree farms, and a variety of other gardeners. When installed and baited correctly, users have had great success excluding deer and other wildlife.

This brochure highlights both electric (psychological) and nonelectric (physical) wildlife fences for hemp production. Keep in mind that electric fences require more maintenance but have portability and economic advantages. Non-electric fences are initially more expensive to install but greatly pay off in the long run since they last so long and there is very little maintenance required.

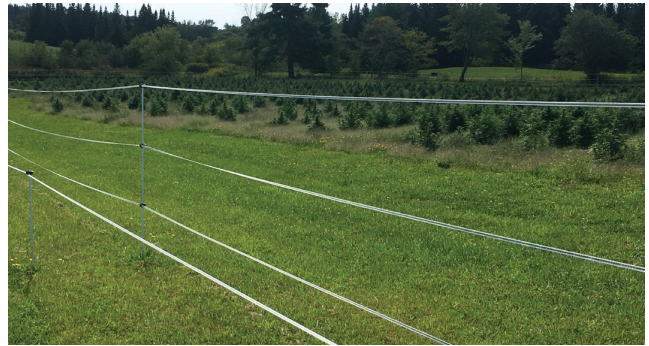
ELECTRIC TAPE OR ROPE FENCE OPTIONS (PSYCHOLOGICAL)

Wellscroft has sold hundreds of these fence systems throughout the Northeast. To see a working system, ask us and we will direct you to an installation near you. The following are the two most common layout options for electric tape fence:



1) 3 Strands of Tape or Rope at 20", 40" and 60" (2D)

- Good only for annual usage. (April-October in moist soil conditions).
- Easily taken down and moved for crop rotation, rented land or non-use in winter. The ½" tape is easier to move; rope should be used in more semi-permanent situations.
- Good for rented land
- Needs to be faithfully baited (aluminum foil pouch with peanut butter inside or scent caps with apple scent)
- Lower wires may be added at 5" and 10" for raccoons, woodchucks, etc.
- Least expensive – quickly erected on ½" fiber rods, T-posts corners and ends
- Longevity: 5-10 years



2) Three Dimensional Tape or Rope Fence (3D)

- Two fences 3' apart; one conductor at 30" on outside, two to three at 20" and 40- 60" on inside
- Very effective but uses more wire, posts, land and is more difficult to maintain. Deer have a hard time jumping through this double fence.
- Can be used when option #1 starts to fail due to increased deer pressure
- Needs to be faithfully baited
- Longevity: 5-10 years

**Call toll-free: 855-327-6336
or shop online at WELLSCROFT.COM**

NON-ELECTRIC FENCING (PHYSICAL)



For a long-term, nearly maintenance-free exclusionary fence, the best option is a woven wire perimeter fence. A non-electric fence must be physically very strong as there is no deterrent to keep the critters from making their way through the

fence. Non-electric fences require the least amount of maintenance and are the most effective. Over many years, studies have shown that an 8' high Fixed Knot high-tensile woven wire fence is the most effective and economical deer exclusion fence. It is, however, more labor intensive to erect, but many growers estimate that they have paid for the fence in crop savings in just two years.

Benefits of a Fixed Knot Woven Wire, 6', 8', or 10' high fence:

- The most cost effective and permanent method in the long run for deer
- One-piece vertical resists snow and ice loads, deer penetration
- Available in black as well as galvanized steel, 14 or 12 ½ gauge
- Least amount of maintenance
- Must be braced with wood or pipe posts. Wood, pipe, or galvanized T-posts can be used in between braces
- Longevity: 25-30 years minimum

20190906v1